



University of Miami
School of Medicine
Medical Computer Systems Laboratory

University of Miami School of Medicine
Department of Surgery – Medical Computer Systems Laboratory (MCSL)

System Requirements

Software Support

Revision	56
Pages	6
Date	Last saved by Joe Lopez on 5/6/2004 at 1:01 PM
File	SystemReqs.doc
Synopsis	This document describes the minimum system requirements for using any of the clinical software products of the University of Miami Medical Computer Systems Laboratory (MCSL).

UNIVERSITY OF MIAMI CONFIDENTIAL PROPRIETARY

This document and the information contained in it are confidential information of University of Miami and shall not be used, published, disclosed or disseminated outside of University of Miami in whole or in part without University of Miami's consent. This document contains trade secrets of University of Miami. Reverse engineering of any or all of the information in this document is prohibited.

Contents

INTRODUCTION.....	2
ACCESSING THE MCSL CLINICAL APPLICATIONS	2
1 MINIMUM SYSTEM REQUIREMENTS	3
1.1 PC AND OS REQUIREMENTS	3
1.2 SCREEN RESOLUTION REQUIREMENTS	3
1.2.1 How to check or change Screen Resolution.....	3
1.3 BROWSERS REQUIREMENTS.....	4
1.3.1 How to tell which version of Internet Explorer you are using	4
1.3.2 How to Change Browser Text Size.....	5
2 ADDITIONAL SUPPORT AND CONTACT INFORMATION	6
2.1 ACCOUNT OR APPLICATION ACCESS	6
2.2 TECHNICAL PROBLEMS?.....	6
2.3 TELEPHONE TECHNICAL SUPPORT.....	6
2.4 TO REQUEST SOFTWARE ENHANCEMENT(S)	6

Introduction

The Medical Computer Systems Laboratory (MCSL), a division of the University Of Miami School Of Medicine – Department of Surgery, develops, maintains and supports a suite of clinical software tools designed to raise levels of quality and accuracy in our environment. Many of the applications we provide are available as browser based internet (web) applications. In order to provide the richest, most consistent user experience across all applications and software tools, we have created this document; which describes the minimum set of client requirements needed to use our software products in the manner in which they were designed.

Accessing the MCSL Clinical Applications

MCSL clinical applications are available via the internet from both on campus and off campus locations. Access to our applications can be found at the following address: <http://www.um-mcsl.com>. At this location, we have provided a default start page which lists the different software applications available at this time. These applications may be access by clicking on the available links presented on this start page.

Security requirements dictate that our applications be available only to registered and authorized users. If you do not already have an account with which to login to our applications, or to request specific access to an application, you may contact us at any time. Contact information for account and/or access requests can be found at the end of this document.

1 Minimum system requirements

1.1 PC and OS requirements

MCSL applications are designed to run on Pentium based computers (as opposed to Apple/Macintosh) running Microsoft Windows version 2000 or later (i.e. Windows XP or Windows 2003).

1.2 Screen Resolution Requirements

All MCSL application screens are optimized for computers with resolution settings of 1024 pixels wide by 768 pixels high (1024 x 768).

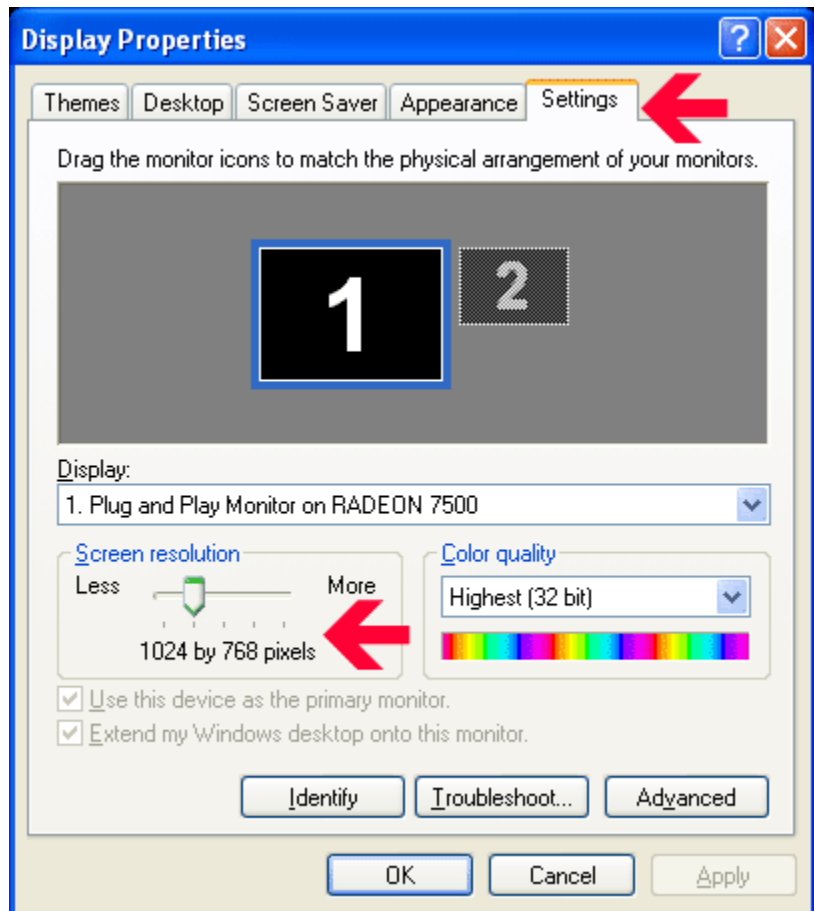
1.2.1 How to check or change Screen Resolution

Step 1 – From your windows desktop, **click the right mouse button** and select **properties**. This will open the Display Properties Window (see screen shot on right).

Step 2 – Click on the **Settings** tab to access the display setting for your computer (see upper **red** arrow in screen shot on right).

Step 3 – If your Screen Resolution is not set to 1024 x 768, you can change this here (see lower **red** arrow in screen shot on right).

Step 4 – After making changes, click on **Apply** and then **OK** to finalize these settings.

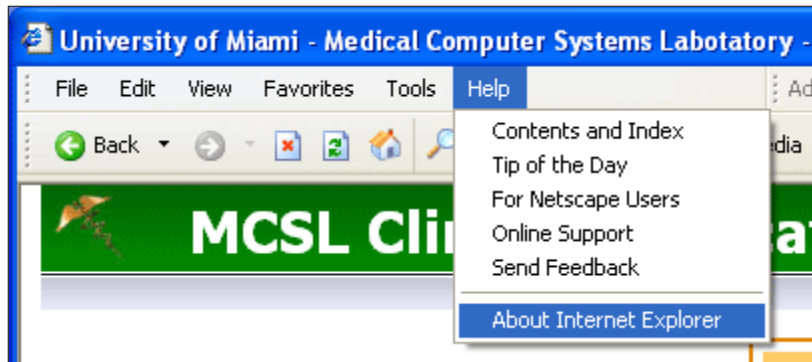


1.3 Browsers Requirements

MCSL applications are designed to be viewed and used within a web browser. In order to provide a rich client experience by utilizing the most current features readily available, we have targeted as a minimum requirement the use of Microsoft's **Internet Explorer** Browser **version 6.0 or later** – with the **latest service pack**. This browser is available as a free download from www.microsoft.com/ie. Minimum system requirements for the installation of this browser in this version are also available from the Microsoft web site.

1.3.1 How to tell which version of Internet Explorer you are using

Step 1 – Open the internet Explorer Browser. From the menu (top) select **HELP** (see screenshot right).



Step 2 – Select (Click) **About Internet Explorer** to open the About Internet Explorer Window. This will display the version you are using (see **red** arrow in screen shot on right).



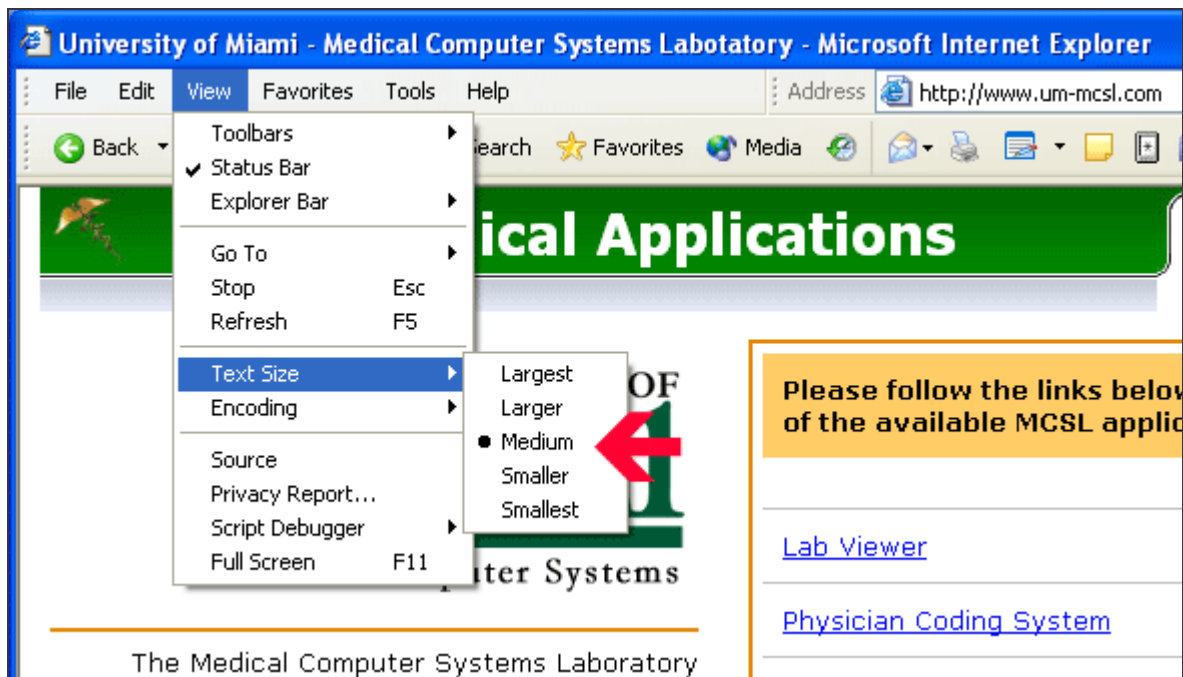
1.3.2 How to Change Browser Text Size

In order to view the MCSL applications as intended, we recommend you set your browser's **text size** setting to **Medium**.

Step 1 – Open the internet Explorer Browser. From the menu (top) select (click) **View** (see screenshot below).

Step 2 – From View on the menu, navigate your cursor downward to highlight **Text Size**. This will display your text size settings options.

Step 3 – Make sure your text size is set to **Medium** (see screenshot below). If it is not set to Medium, you may change this setting here. You do not need to make any other selections, nor do you need to restart the browser in order for this change to take effect.



Changing text size in your browser

2 Additional Support and Contact Information

2.1 Account or Application Access

For account services, which includes requesting an account, restoring an expired account, or requesting access to a specific application; you may contact Mary Murtha, the director of our department, via email at: MaryM@Miami.edu

2.2 Technical problems?

For technical support with any of the MCSL applications, you may email our webmaster at: webmaster@mcsl-mail.med.miami.edu.

2.3 Telephone technical Support

For all MCSL clinical applications, telephone support is available 24 hours a day by calling our support hotline at: **(305) 585-1234**

2.4 To request software enhancement(s)

You are always welcome to contact us to request additions, enhancements or improvements to our clinical applications by contacting Mary Murtha, the director of our department, via email at: MaryM@Miami.edu.